



ABOVE & BEYOND

2016.5 MY RANGE ROVER PRODUCT INFORMATION
WITH PRICING

MARKETING
BULLETIN

8-MAR-16 | No.: MPR16-03 | Section: PRODUCT/ PRICING | Market: USA

2016.5 MY Range Rover Product Summary

Jaguar Land Rover North America, LLC is pleased to announce product changes and details relating to the 2016.5 Range Rover.



Updated option sheets codes for all items /changes are provided on the following pages. Changes are highlighted in RED.

On the final page a summary of the available port installed accessory items is included. Please be reminded the items referenced as "Preferred" will be installed at Port of Entry prior to vehicle dispatch. These items can be deselected in Vista if not required. The items listed as "Optional" can also be added for port install based on your preference but need to be selected in Vista as desired.

2016.5 Updates At-A-Glance

Engines: Engine Updates at 16.5 model year with VIN Change

Pricing changes effective April 1, 2016: As communicated in bulletin MPR 16-02, there will be price increases on certain options and derivatives effective April 1st 2016. Price changes are highlighted in the following pages of this bulletin.

ENGINES

Gasoline Engine Update for 16.5 MY

- The 2016.5 Range Rover receive minor mid-year engine updates. To meet global demand, the gasoline V6 and V8 engines will now be manufactured at two factories in the UK.
- The supercharged 3.0L gasoline V6 engine, which is built alongside the V8 engine, will receive manufacturing revisions that will change the engine displacement from 2,995cc to 3,012cc.
- This engine update will be reflected in position seven of the VIN, which will change from “V” to “P”.
- These internal engine changes will have no impact on any aspect of vehicle performance.

Td6 3.0 Turbocharged Diesel Engine

- For the 2016 MY, the Td6 Diesel engine will be introduced for USA and Canada. Offering a combined fuel economy improvement of up to 32%, on the HSE these will be identifiable by a badge on the tailgate. The SE diesel model does not have a specific diesel badge.
- This engine produces 254HP and 440 lb/ft of Torque. It is a 3-liter 60 degree turbocharged V6, and is a thoroughly proven engine design which has been used throughout the world for over 10 years.
- To meet strict US emissions standards, this vehicle will feature a DEF (Diesel Exhaust Fluid) emissions reduction system, which is used by most modern diesel engines sold in the US. The fluid capacity is designed to coincide with routine scheduled maintenance. If needed, the fluid is readily available for purchase at retail stores and service stations. The vehicle monitors the level of DEF in the tank and the vehicle will inform the driver in advance if the DEF needs to be refilled. Federal regulations don't permit the engine to restart if it runs out of DEF.



380HP 3.0 V6 upgrade for HSE

- On the HSE a new 380HP version of the V6 engine is standard. The 340 HP V6 3.0 S/C will continue as the base engine.
- The 380HP engine includes a front brake upgrade to the larger V8 brakes, which requires 20” wheels.

CHASSIS UPDATES

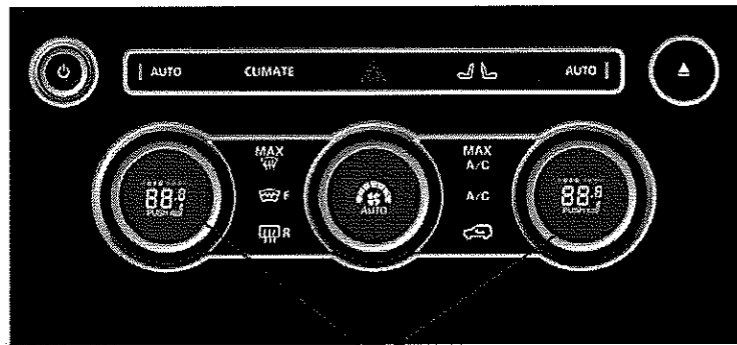
Automatic Access Height - For 2016, the vehicle provides Automatic Access Height with the inputs tied to the seatbelt, ignition position, gear position, and doors. Automatic Access height requires the vehicle to be in Park (P).

All Terrain Progress Control (ATPC) - All Terrain Progress Control (ATPC) is a new off-road crawl function in cruise control. It allows the customer to set a preferred crawl speed using the cruise control, and the vehicle will modulate all systems to maintain that speed. It is available on vehicles with two speed transfer case and Terrain Response. This feature will now be standard on all derivatives where Terrain Response 2 is Standard, or available as part of a Package.

INTERIOR UPDATES:

Revised Heated Seat Controls -

The method to adjust the temperature of the heated / cooled seats has been changed. It is now accessible by pushing the temperature control knob instead of using the touch screen.



New Push function rotaries - Cabin temperature controls with new dual mode function by pushing the rotary for the heated/cooled seat feature. The rotary dial can then be adjusted to the required level (heat or cool).

Higher Resolution Rear View Camera and Surround Camera System

– This new camera system has a higher 1.2 megapixel resolution and uses four cameras in total – one in the front, two in the mirrors, and one in the back. Previously, there were two front cameras. The image is digitally processed to create a virtual view that appears to be above the vehicle.

Touchscreen Menus - Infotainment touch screen menus have been updated

Next Generation Tire Pressure Monitor System (TPMS) - The actual pressure of the tires can now be displayed on the dashboard service menu.

Soft Touch Coating on interior trim replaced with Hard Coating - We are changing interior switches / buttons / trim bezels from a soft touch coating to a hard coating for increased durability.

Dashboard Tailgate Switch Cluster - The improved switch cluster maintains a tailgate release and illumination dimmer, and has space for an optional Lane Departure Warning switch and/or a Deployable Side Step switch (accessory option).

Cooler Box is now an Optional Part of Climate Comfort and Visibility Packages - Customer feedback has indicated a desire for more center console storage. **There are now two different packages, with and without the cooler box.**

PLEASE BE SURE TO SELECT THIS FEATURE AS REQUIRED

Heated Windshield Delete (Non-Heated Windshield) now Available - This change is for customers who prefer the windshield without the heating elements. **This is now a separate line item in VISTA.**

InControl Technologies now available (Refer to InControl Bulletin OGI 15-24)

- InControl apps – Smartphone interface for the in car touchscreen
- InControl Remote – Using a smartphone, you can check vehicle status, lock/unlock doors
- InControl Protect - Stolen Vehicle Locator, Emergency “E” Call, Roadside Assistance “B” Call
- InControl WiFi - In-car WiFi using Cellular data
- Remote Start not available on 2016 and 2016.5 vehicles

Executive Class Seating - Enhanced Front Passenger Seat Control

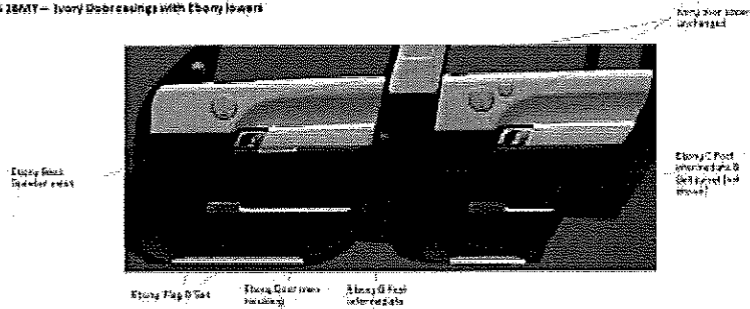
- At 15MY, with executive class seating (2 individual seats in rear), the rear passenger could only move the front passenger seat forwards and backwards using the button on the side of the front seat. From 16MY, on vehicles with Executive Class Seating, the rear passenger can now control the movement of their own seat and the front passenger seat with a revised button located on the rear center console.
- This change now gives full control of the front seat. The existing button on the front seat will remain to move the seat forward and backwards.

Interior Color Changes- For all 2016 derivatives except SVAutobiography, we are changing the lower interior trim to Ebony on the Ebony/Ivory, Ebony/Tan and Ebony/Pimento interiors. See images below. The existing trim codes will remain the same.

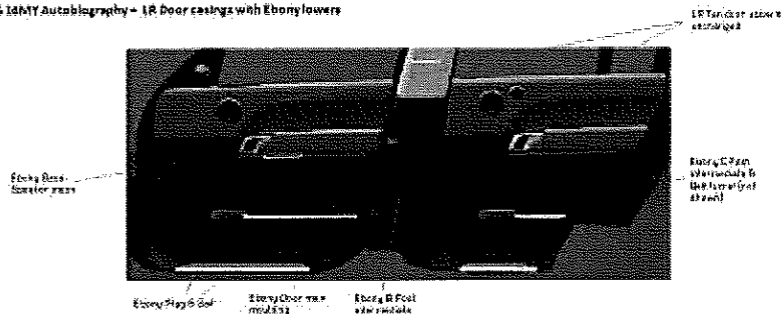
L405 16MY - Ebony/Ivory interior example

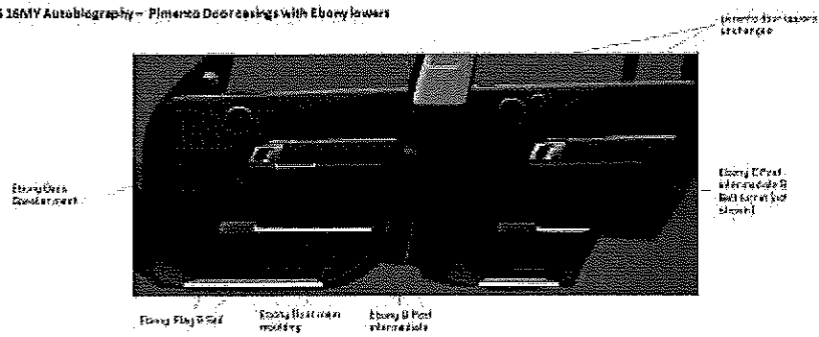


L405 16MY - Ivory Door casings with Ebony lowers



L405 14MY Autobiography - IR Door casings with Ebony lowers





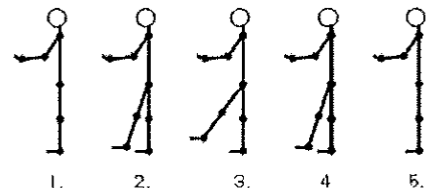
EXTERIOR UPDATES

Hands-Free Gesture Controlled Powered Tailgate (Opening using foot movement)

The powered tailgate has been enhanced with proximity sensing. This will allow the customer to operate the tailgate from outside the vehicle without needing to physically touch either the vehicle or the remote key fob. Provided that the key fob is detected, the tailgate can be operated by pointing a foot underneath the rear corners of the vehicle



There are two sensors mounted on either side of the tailgate. This allows curbside operation, rather than needing to be immediately behind the vehicle. The sensors are located at the sides of the rear bumper – indicated by the blue line on the image, the trigger area is in green.



Example of foot movement sequence:

Rear Tailgate Camera Washer - A new rear camera washer nozzle has been installed. This washer automatically be operated every time the rear wiper washer is activated. This will provide customers with improved rear camera visibility.

IRR (Infrared Reflective) Glass - All US and Canada market vehicles will have standard IRR Glass. This improves passenger comfort by reducing Infrared solar radiation. We have provided cutout "windows" in the reflective material adjacent to the rear view mirror. These spaces can be used for toll passes and also for radar/laser detectors (where legal).

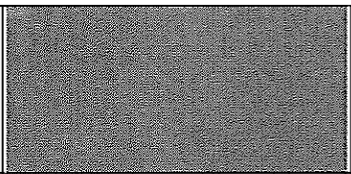
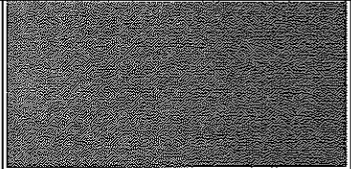
Active Vanes - The new standard active vanes improve aerodynamics and efficiency by controlling the flow of air into the grille.

16MY Wheel Code Changes - Some wheels have changed Vista Codes.

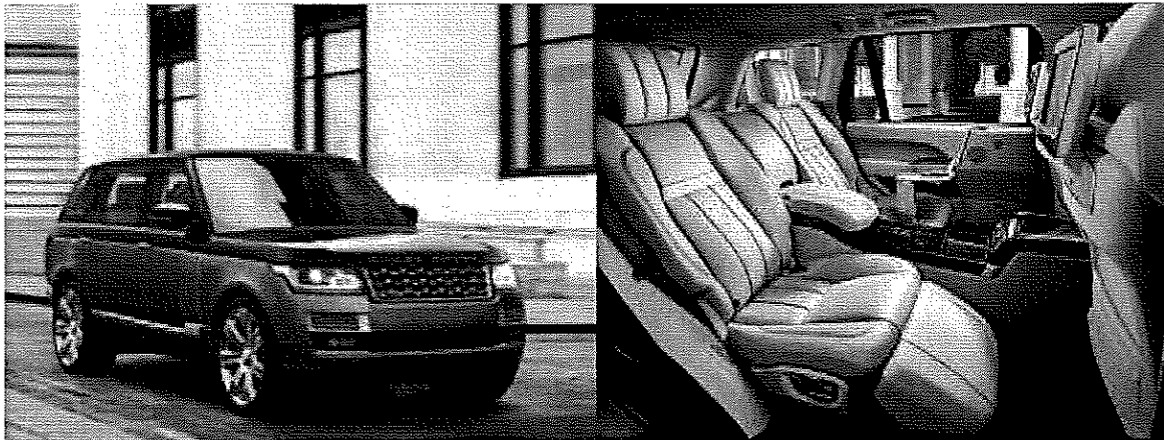
Exterior Color Changes

There are two new exterior colors at 16MY: Waitomo Grey and Carpathian Grey Both colors are Metallic.

Havana and Causeway Grey have been discontinued. Aleutian Silver will no longer be available after October 2015

Waitomo Grey*	
Carpathian Grey*	

MODEL LINEUP UPDATE: 2016 Range Rover SVAutobiography replaces Autobiography Black



For 2016, the Autobiography Black is renamed 'SVAutobiography' to acknowledge the growing role of JLR Special Vehicle Operations in creating products such as SVAutobiography. 16MY updates include an exclusive 550 HP V8 Supercharged powertrain and chassis option and a number of exterior and interior enhancements as well as an exclusive 'SVAutobiography' badge on the tailgate and dashboard. SVAutobiography production commences 22nd July 2015.

SVAutobiography requires an additional 3 to 4 weeks for conversion time in the SVO workshop, after production.

The SVAutobiography will receive the **550 HP Supercharged V8 engine** from the Range Rover Sport SVR. This is an increase of 40 HP.

The chassis has been tuned to harness the increased power and torque from the engine by providing more support for the car in turns and increased levels of damping. The steering ratio is increased while the spring rates are unchanged. SVAutobiography brakes are from the Range Rover Sport SVR. Brake calipers are finished in gloss black and feature Brembo components. The towing capability on the V8 Supercharged 550 HP engine has been confirmed as 6,614 lbs (3000kg) rather than the standard 7,716 lbs (3,500kg) gross towing load.

SVAutobiography Exterior Duo Tone Paint - The new SVAutobiography can be ordered in a unique duo tone exterior paint. This option enables customers to specify the vehicle in one of nine colors below